

C:\UniServerZ\home\us\_opt1

config.inc.php - Notepad  
127.0.0.1:3307

```
// === Get MySQL Password =====
$file="$root\httpasswd\mysql\passwd.txt" ; //Name and path of pa
$fh = fopen($file, 'r'); //Open for read
$password = trim(fgets($fh)); //Get first line remo
fclose($fh); //Close
// ===== END Get MySQL =====
```

```
/* Webserver upload/save/import directories */

$cfg['UploadDir'] = "$root\etc\phpmyadmin"; // Directory for uploaded files
$cfg['SaveDir'] = "$root\etc\phpmyadmin"; // Directory where phpMyAdmin can save e:
$cfg['docSQLDir'] = "$root\etc"; // Directory for docSQL imports,
$cfg['TempDir'] = "$root\tmp"; // Directory where phpMyAdmin can save tei
```

```
/* Servers configuration */
$i = 0;
```

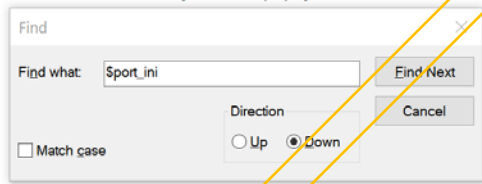
```
/* Server: localhost [1] */
$i++;
```

```
/* Authentication section */
$cfg['Servers'][$i]['auth_type'] = 'config'; // Authentication method (config, ht
$cfg['Servers'][$i]['user'] = 'root'; // MySQL user
$cfg['Servers'][$i]['password'] = $password; // MySQL password (only needed with
$cfg['Servers'][$i]['AllowNoPassword'] = false; // Must use password
```

```
/* Server parameters */
$cfg['Servers'][$i]['verbose'] = 'Uniform Server'; // Verbose name for this host - :
$cfg['Servers'][$i]['host'] = '127.0.0.1'; // MySQL hostname or IP address
$cfg['Servers'][$i]['port'] = $port_ini; // Port set in ini See above
$cfg['Servers'][$i]['socket'] = ''; // Leave blank for default socke
$cfg['Servers'][$i]['connect_type'] = 'tcp'; // How to connect to MySQL server
$cfg['Servers'][$i]['extension'] = 'mysqli'; // MySQL extension to use ('mysq
$cfg['Servers'][$i]['compress'] = false; // No compression
```

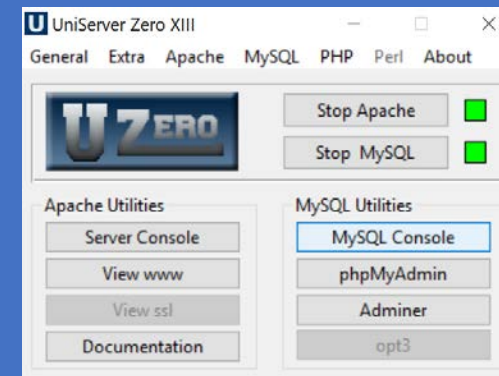
```
/* PMA User advanced features */
$cfg['Servers'][$i]['controluser'] = 'pma';
$cfg['Servers'][$i]['controlpass'] = $password;
```

```
/* Server parameters */
$cfg['Servers'][$i]['verbose'] = 'Uniform Server'; // Verbose name for this host -
$cfg['Servers'][$i]['host'] = '127.0.0.1'; // MySQL hostname or IP address
$cfg['Servers'][$i]['port'] = '3307'; // Port set in ini See above
$cfg['Servers'][$i]['socket'] = ''; // Leave blank for default socke
$cfg['Servers'][$i]['connect_type'] = 'tcp'; // How to connect to MySQL server
$cfg['Servers'][$i]['extension'] = 'mysqli'; // MySQL extension to use ('mysq
$cfg['Servers'][$i]['compress'] = false; // No compression
```



之前跟老師做了這設定，而且是成功的。

只作參考，以下是 account setting



```
C:\> "SERVER MySQL Command Console" - mysql.exe --host=127.0.0.1 --port=3307 --user=root --password=root
Warning: Using a password on the command line interface can be insecure.
Welcome to the MySQL monitor. Commands end with ; or \g.
Your MySQL connection id is 1
Server version: 5.6.35 MySQL Community Server (GPL)

Copyright (c) 2000, 2016, Oracle and/or its affiliates. All rights reserved.

Oracle is a registered trademark of Oracle Corporation and/or its
affiliates. Other names may be trademarks of their respective
owners.

Type 'help;' or '\h' for help. Type '\c' to clear the current input statement.

mysql>
```

```

tool.php
1  <?php
2
3  $mysqli = new mysqli('localhost:3307', 'my_user', 'my_password', 'my_db');
4
5  if (mysqli_connect_error()) {
6      die('Connect Error (' . mysqli_connect_errno() . ') '
7          . mysqli_connect_error());
8  }
9
10 echo 'Success... ' . $mysqli->host_info . "\n";
11
12 $mysqli->close();
13
14
15 /* 引入 */
16 require_once "header.php";
17 if (!isset($_SESSION['user_name'])) {
18     header("location:index.php");
19     exit;
20 }
21
22 /* 流程控制 */
23 $op = isset($_REQUEST['op']) ? my_filter($_REQUEST['op'], "string") : '';
24 switch ($op) {
25     case 'goods_form':
26         goods_form();
27         break;
28
29     case 'insert_goods':
30         $goods_sn = insert_goods();
31         header("location:index.php?goods_sn={$goods_sn}");
32         exit;
33         break;
34 }
35
36 /* 輸出 */
37 require_once "footer.php";
38
39

```

## Example #1 mysqli::\_\_construct() example

## Object oriented style

```

<?php
$mysqli = new mysqli('localhost', 'my_user', 'my_password', 'my_db');

/*
 * This is the "official" OO way to do it,
 * BUT $connect_error was broken until PHP 5.2.9 and 5.3.0.
 */
if ($mysqli->connect_error) {
    die('Connect Error (' . $mysqli->connect_errno . ') '
        . $mysqli->connect_error);
}

/*
 * Use this instead of $connect_error if you need to ensure
 * compatibility with PHP versions prior to 5.2.9 and 5.3.0.
 */
if (mysqli_connect_error()) {
    die('Connect Error (' . mysqli_connect_errno() . ') '
        . mysqli_connect_error());
}

echo 'Success... ' . $mysqli->host_info . "\n";

$mysqli->close();
?>

```

## Object oriented style when extending mysqli class

```

<?php

class foo_mysqli extends mysqli {
    public function __construct($host, $user, $pass, $db) {

```

```
tool.php
1  <?php
2
3  $mysqli = new mysqli('localhost:3307', 'my_user', 'my_password', 'my_db');
4
5  if (mysqli_connect_error()) {
6      die('Connect Error (' . mysqli_connect_errno() . ') '
7          . mysqli_connect_error());
8  }
9
10 echo 'Success... ' . $mysqli->host_info . "\n";
11
12 $mysqli->close();
13
14
15 /* 引入 */
16 require_once "header.php";
17 if (!isset($_SESSION['user_name'])) {
18     header("location:index.php");
19     exit;
20 }
21
22 /* 流程控制 */
23 $op = isset($_REQUEST['op']) ? my_filter($_REQUEST['op'], "string") : '';
24 switch ($op) {
25     case 'goods_form':
26         goods_form();
27         break;
28
29     case 'insert_goods':
30         $goods_sn = insert_goods();
31         header("location:index.php?goods_sn={$goods_sn}");
32         exit;
33         break;
34 }
35
36 /* 輸出 */
37 require_once "footer.php";
38
39
```



Connect Error (1045) Access denied for user 'my\_user'@'localhost' (using password: YES)

還是出現這個字眼

“無法連上資料庫 (1045) Access denied for user 'root'@'localhost' (using password: YES)”



[http://localhost:81/mini\\_shop/tool.php?op=goods\\_form](http://localhost:81/mini_shop/tool.php?op=goods_form)  
[http://localhost:81/mini\\_shop/tool.php](http://localhost:81/mini_shop/tool.php)  
[http://localhost:81/mini\\_shop/index.php](http://localhost:81/mini_shop/index.php)